

Juniper Allegro CX™ Fast Survey Upgrade / Installation

1. Introduction

Thales Navigation has introduced a new data collector with the Z-Max system. This new platform Allegro CX™ from Juniper System comes with a integrated Bluetooth communication module. Therefore it is not necessary to add any other device to have a wireless communication with your Z-Max receiver. Of course, the Bluetooth software is already installed on the platform, there is no need to install it anymore like it was with the previous platform Allegro CE™.

Accessories needed:

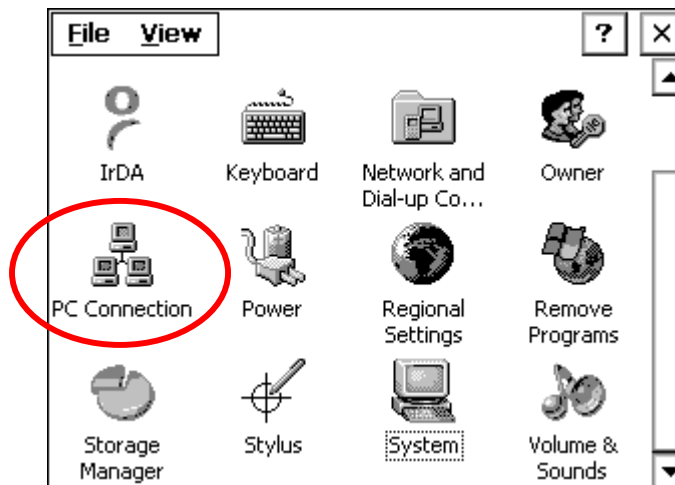
- Allegro CX™ Serial cable P/N 12446 (use this cable only)
 - Fast Survey CD Rom Rev F ; P/N 50007.
 - PC with ActiveSync V3.7 or later already installed
- ActiveSync V3.7 can be downloaded from Windows web site at :

<http://www.microsoft.com/downloads/>

2. ActiveSync connection between the Allegro CX™ and your computer

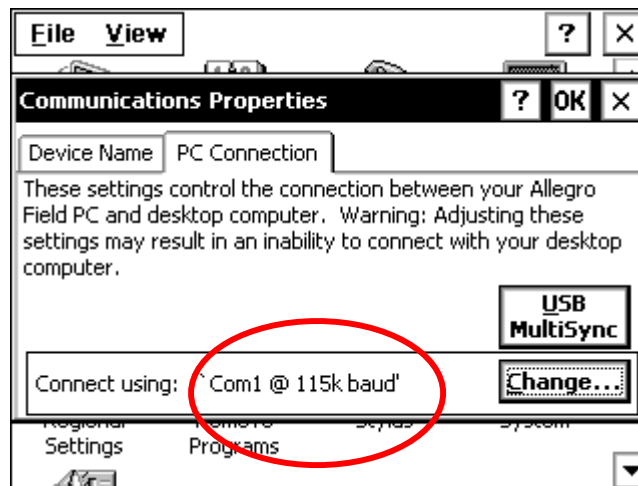
➤ Connection.

On the field terminal, go to Start/Settings/Control Panel/ and click on PC Connection



PC Connection menu on Allegro CX™

Check that the “com 1 @ 115 k baud” option is selected in the “Connect using” window, or else click on “Change” and select the “com1 @ 115 k baud” option.
Click OK and the X on the top of the Control Panel window to close it.

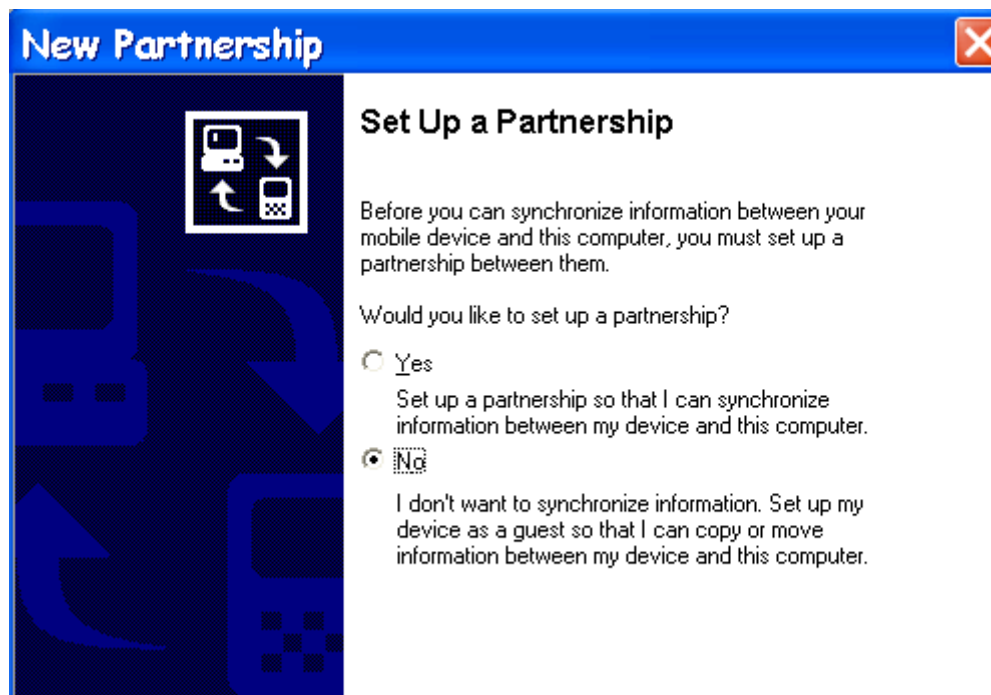


Communication Com selection

Connect the field terminal com1 to your PC com using the Allegro CX™ Serial cable.

On the field terminal, double click on PCLink in order to link the field terminal with your PC through Microsoft ActiveSync.

Do not set up a partnership between the Allegro CX™ and your computer.



3. Loading Fast Survey into the Field Terminal

The FAST Survey installation files can be found on the FAST Survey CD Rom that comes with your equipment.

The FAST Survey installation file may be also downloaded from Thales Navigation ftp site at :

<ftp.thalesnavigation.com>

❑ **If you are using the FAST Survey CD Rom:**

Insert the FAST Survey CD Rom in your computer CD drive.

If the Autorun does not start the setup automatically, start Windows Explorer and run Setup.exe located on the CD Rom root.

Select the desired language according to your needs in the 'Installation Windows':



Click on **“Install FAST Survey V1.50.026 for Allegro CX™”** and follow the Install Shield instructions on your computer screen.

❑ **If you want to download the FAST Survey file from Thales Navigation ftp site :**

Download the version file according to the desired language into your computer at :

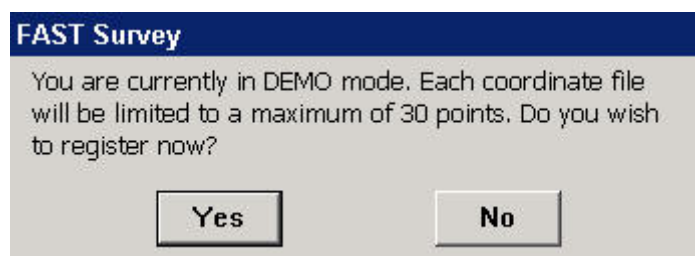
<ftp.thalesnavigation.com>

Run the file and follow the Install Shield instructions on the PC Screen.

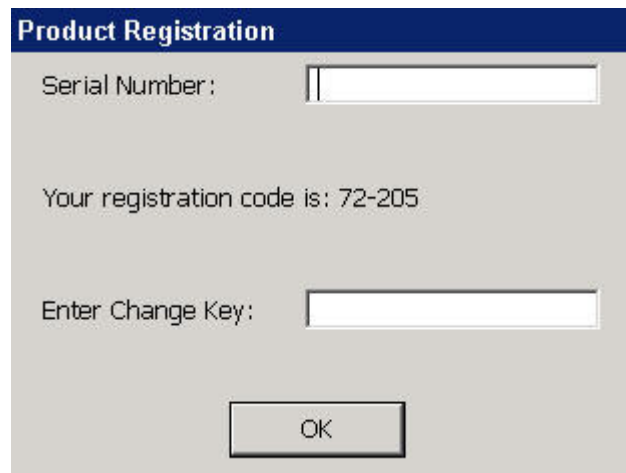
➤ **Fast Survey Registration**

The registration codes are stick on the back of the Allegro CX™ platform.

Start FAST Survey and click on Yes following screen:



Then enter your FAST Survey Serial Number and Change Key:



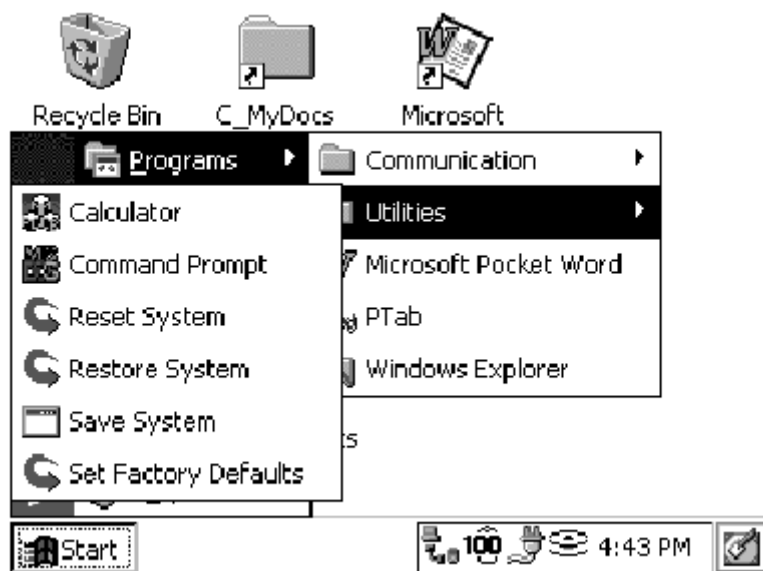
Click on OK.

If for any reason, you have lost the registration information, please contact your nearest Thales Navigation dealers.

➤ Save System

Once everything has been properly installed, it is highly recommended to save the programs and registries in the Allegro CX™ Back up Ram.

To do so, go to Start/Programs/utilities and click on Save System :



➤ Restore System

If the batteries are removed from the Allegro CX™ for longer than five minutes, the Allegro CX™ *resets* to the Desktop instead of resuming to the screen that was last displayed before the batteries were removed. All data that was stored in RAM are lost.

Go to Start/Programs/Utilities/Restore System to recover the programs and data that have been saved last time you did a 'Save System'.

Note that all FAST Survey data (software files and job data file) are stored on the non-volatile C_Drive. Therefore everything is still available even after a battery failure. Only desktop shortcuts and registries are lost.